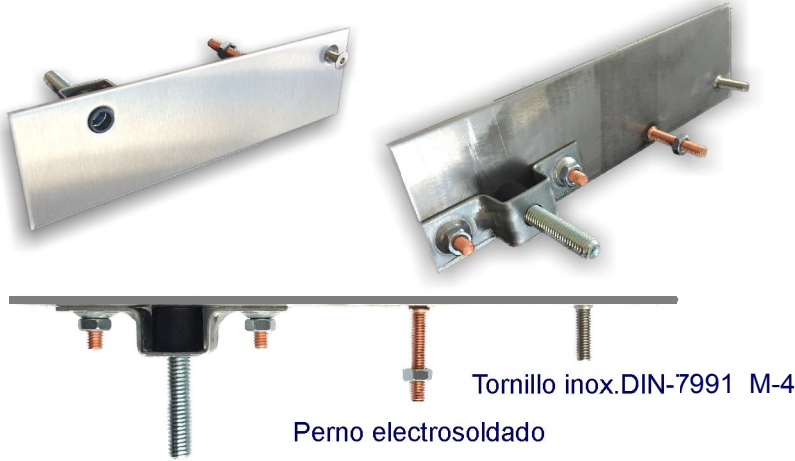


BOTONERA DE CABINA

BOTONERA DE CABINA SERIE 3D ACERO.INOX.

TIPOS DE FIJACIONES

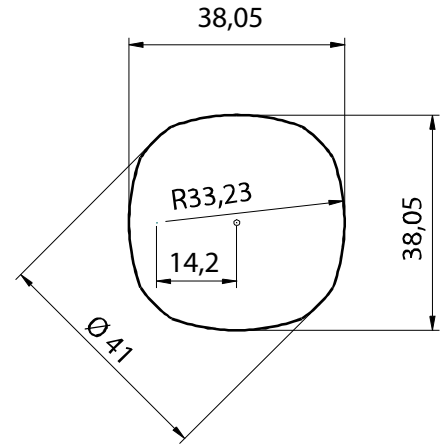


Fijación oculta tornillo DIN-912 M-6

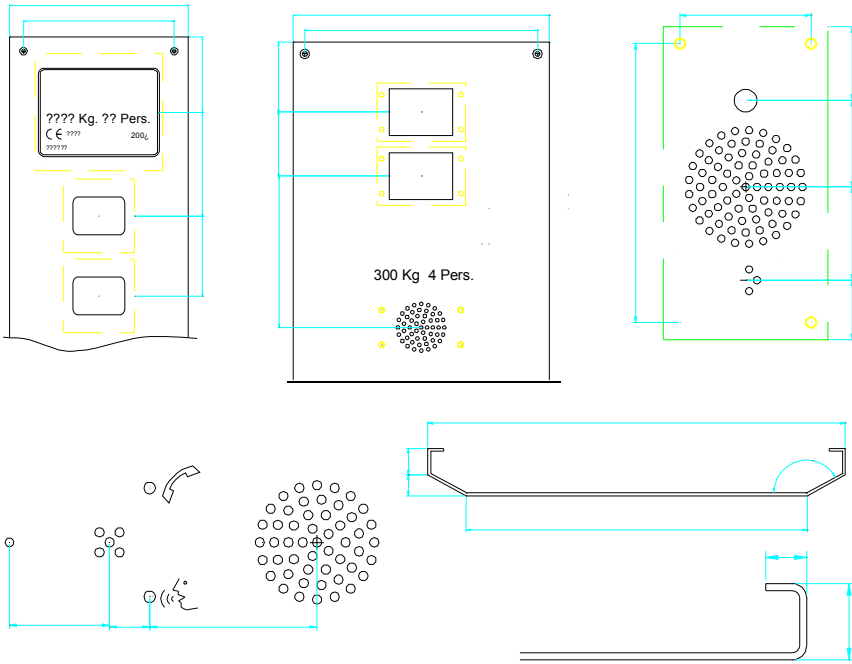
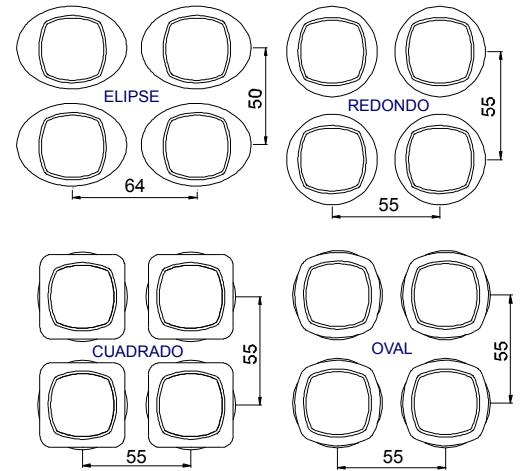
Tornillo inox.DIN-7991 M-4

Perno electrosoldado

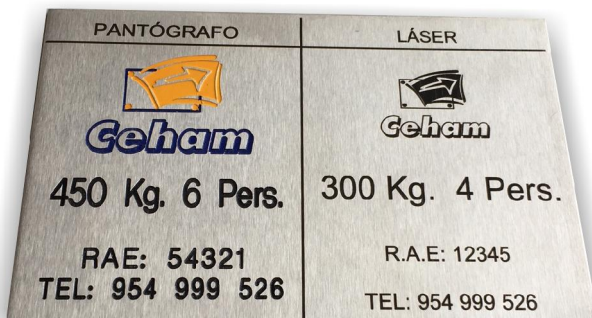
DIMENSIONES HUECO



DISTANCIAS MÍNIMAS

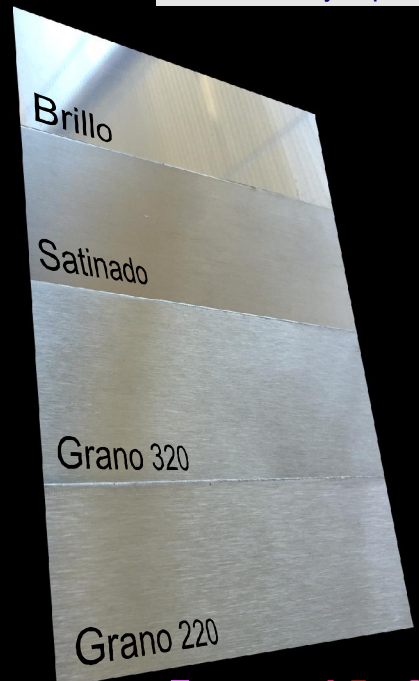


HUECO DISPLAY, PLAFÓN, INTERFONO Y PLEGADOS OPCIONALES



GRABADOS LÁSER, PANTÓGRAFO Y ELECTROQUÍMICO

Acabados y espesores



Espesor: 1,5 y 2 mm.