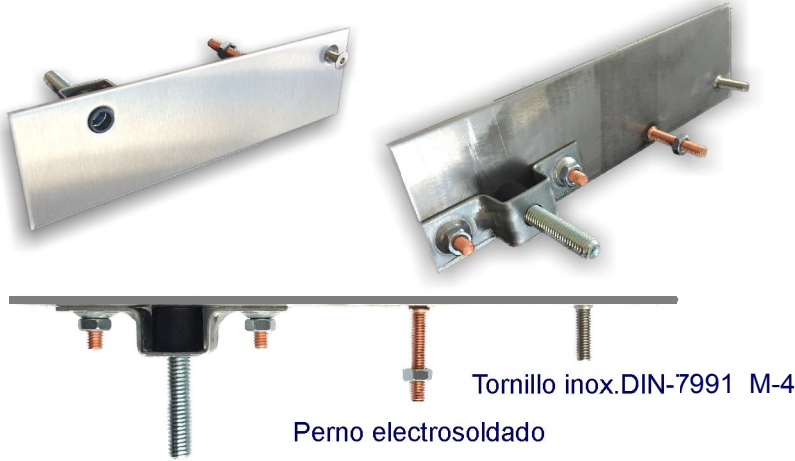
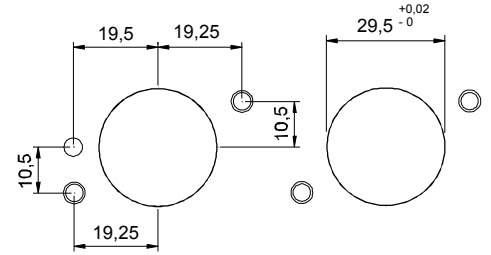
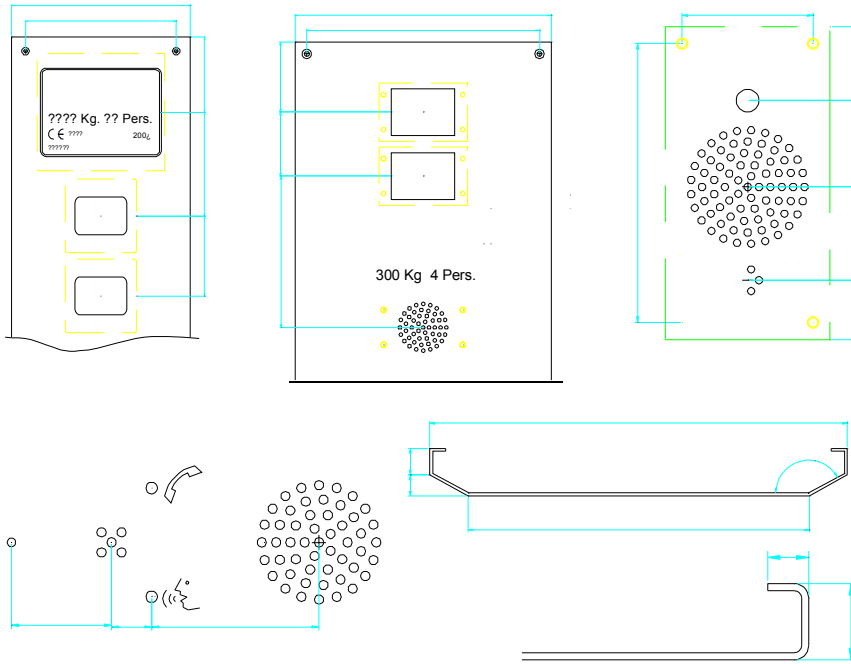
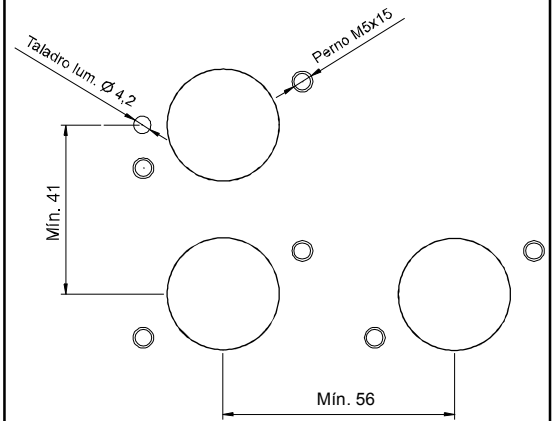
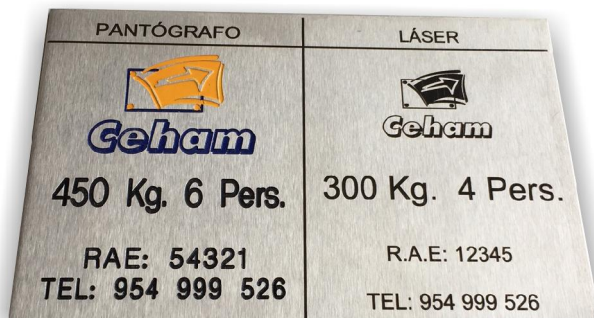
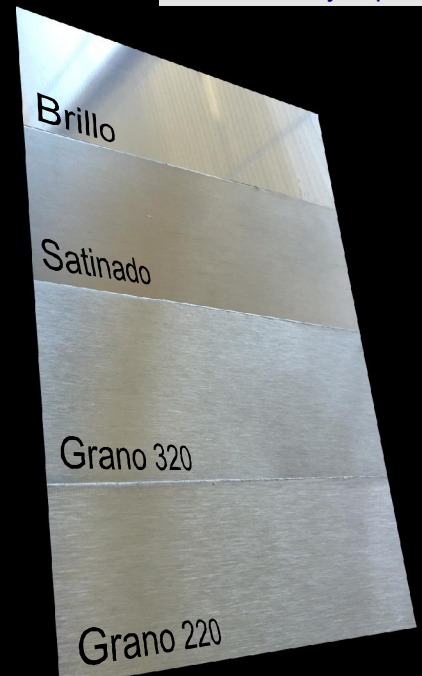


BOTONERA DE CABINA
BOTONERA DE CABINA SERIE SPR ACERO.INOX.
TIPOS DE FIJACIONES


Fijación oculta tornillo DIN-912 M-6

DIMENSIONES HUECO

DISTANCIAS MÍNIMAS

HUECO DISPLAY, PLAFÓN, INTERFONO Y PLEGADOS OPCIONALES

GRABADOS LÁSER, PANTÓGRAFO Y ELECTROQUÍMICO
Acabados y espesores

Espesor: 1,5 y 2 mm.