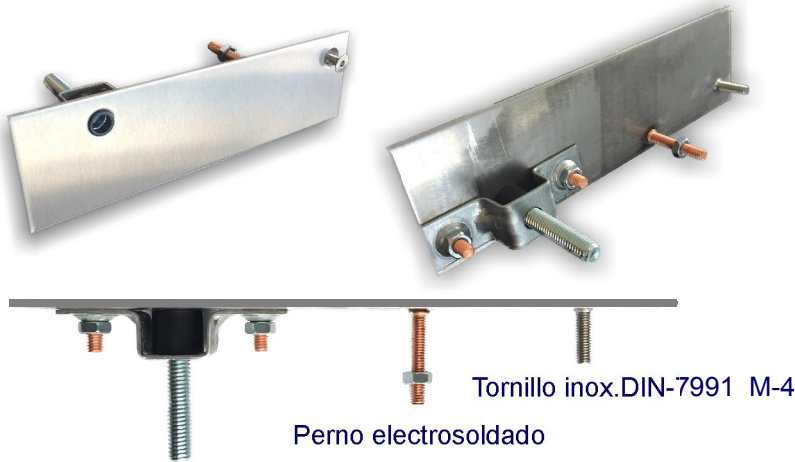


BOTONERA DE PASILLO

BOTONERA DE PASILLO SERIE 3D ACERO.INOX.

TIPOS DE FIJACIONES

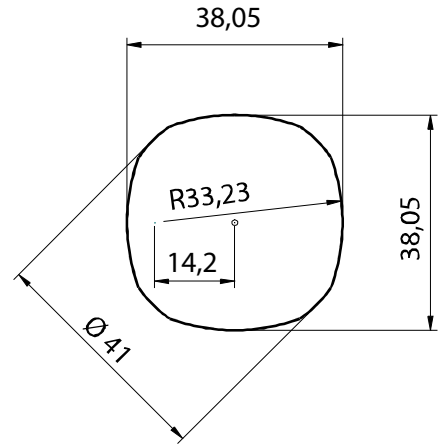


Fijación oculta tornillo DIN-912 M-6

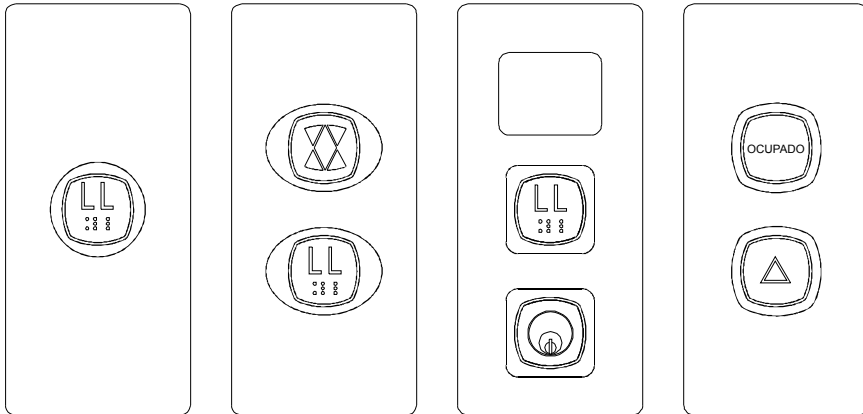
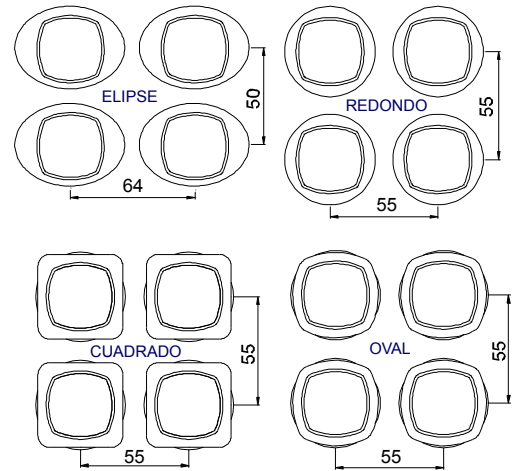
Tornillo inox.DIN-7991 M-4

Perno electrosoldado

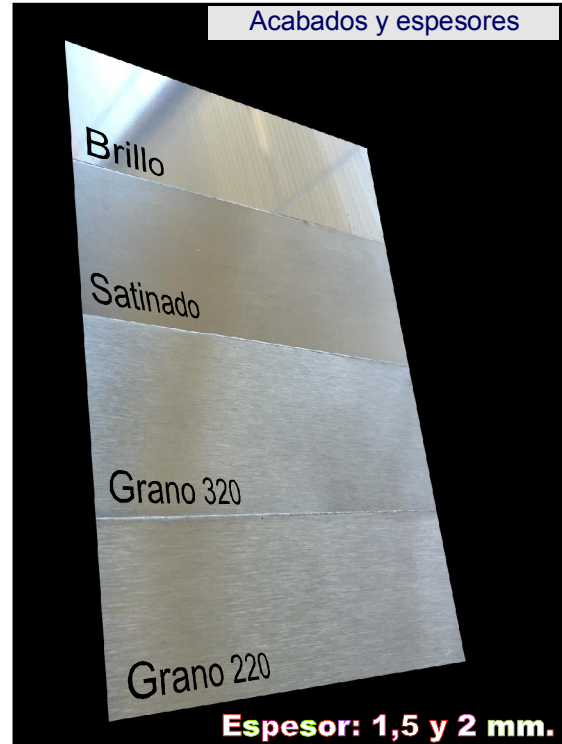
DIMENSIONES HUECO



DISTANCIAS MÍNIMAS



Acabados y espesores



EJEMPLOS CONFIGURACIÓN BOTONERAS DE PASILLO

PANTÓGRAFO	LÁSER
	
Geham	Geham
450 Kg. 6 Pers.	300 Kg. 4 Pers.
RAE: 54321	R.A.E: 12345
TEL: 954 999 526	TEL: 954 999 526

GRABADOS LÁSER, PANTÓGRAFO Y ELECTROQUÍMICO